

3D Modelling

SEN WORKSHOPS

- Promoting Environmental Consciousness
- Encouraging Creativity
- Developing Problem-solving Skills
- Building Confidence
- Fostering Collaboration
- Highlighting Sustainability Principles

OBJECTIVES |

The EDGE Sustainable Modelling sessions equip our young people with the knowledge, skill and creative flair to create and upcycle items using discarded materials and objects. This will promote sustainability and environmental awareness by reusing items that would otherwise be sent to landfill.

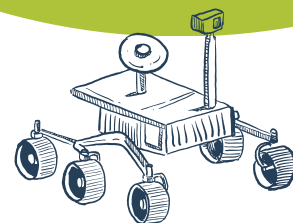
WHEN |

THURSDAYS 1 - 3pm

Term time only

WHERE |

EDGE Ahead Hub
St Johns Church
St Johns
Woking GU21 7QN



FOR MORE INFORMATION GET IN TOUCH

info@edge-consultancy.com

www.edge-consultancy.com

07425471014 